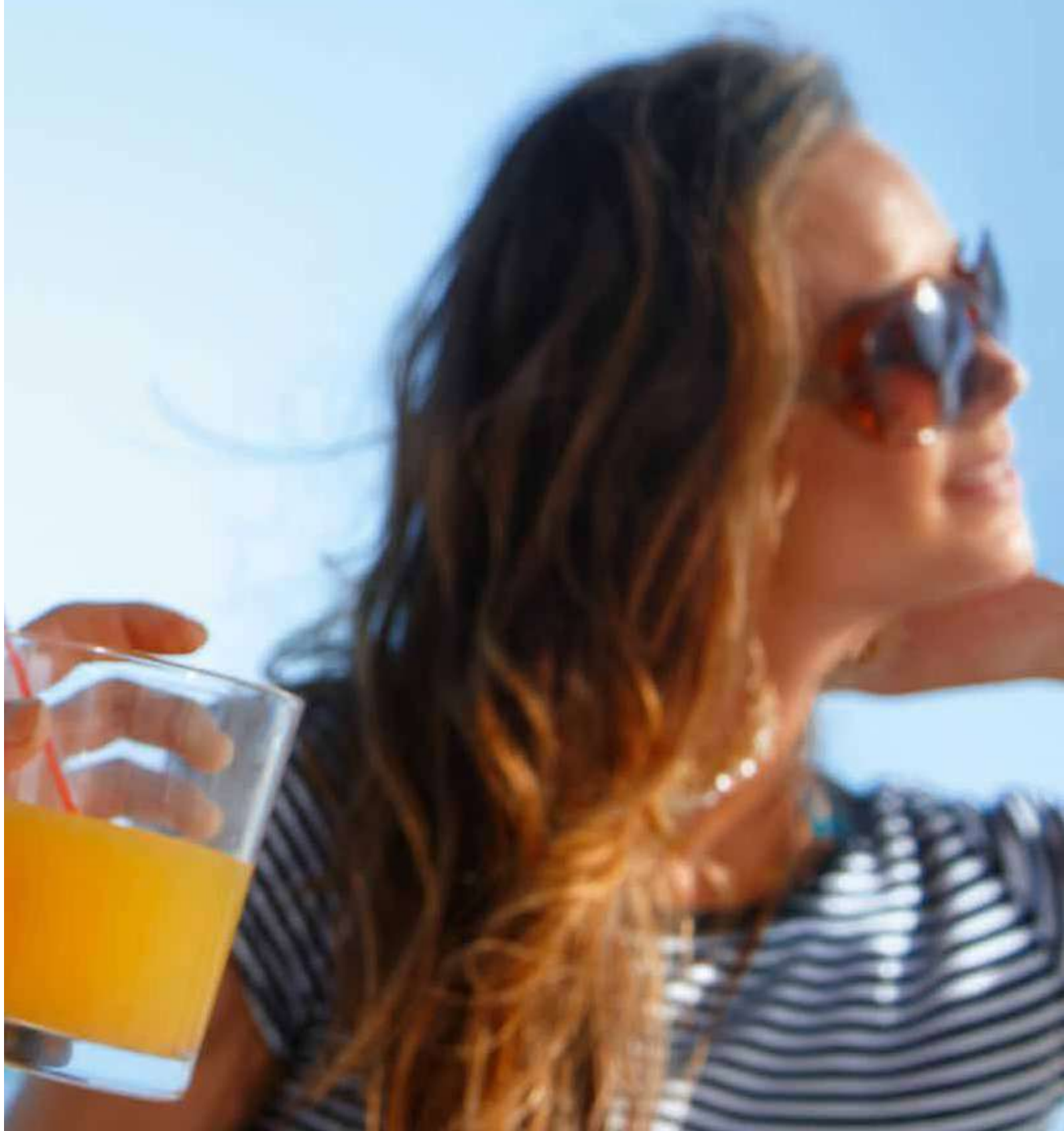
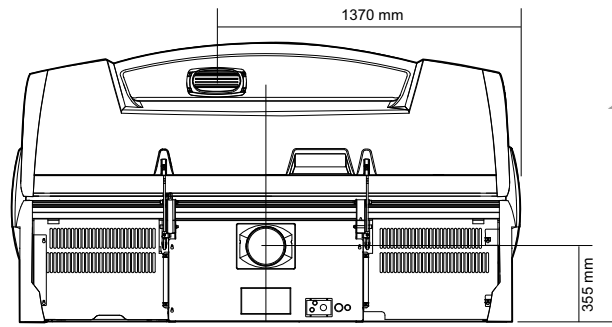
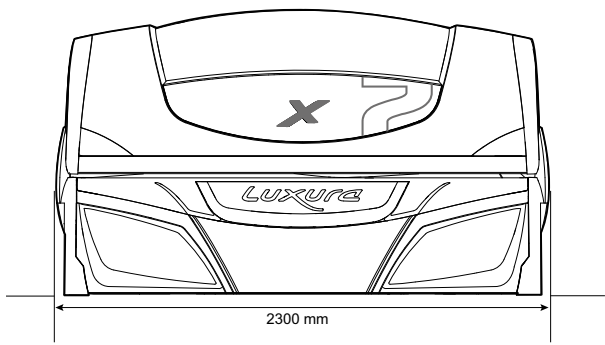


we like X 7 ...

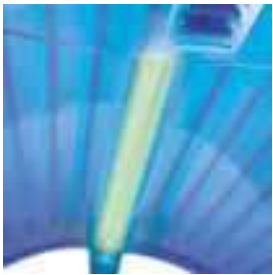




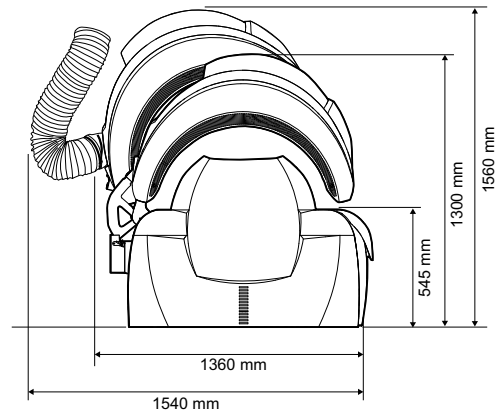
Eyeliner:
An optional Ambient FlowLight element at the front panel of the bench



Connect line:
An Ambient FlowLight element that connects the bench and canopy



Centre line:
An Ambient FlowLight element that runs in the centre of the canopy



Brandshield in inox steel polished



BPS/HPS



features

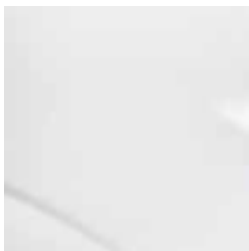
standard

- BPS (not for 38 SPr)
- Adjustable face tanners (0-1-2-3)
- ContourPlus
- XL light in bench
- Full colour display
- Smart touch control
- 8 steps adjustable body cooler
- 8 steps adjustable face cooler
- Dust filters
- Smart cooling
- EasyLift acrylic system bench
- Front Panel Easy Move
- Quickstart function
- Programmable internal timer
- Connection for external timer
- SoundAround Plus¹
- Loudspeakers
- 1 hour counter non-resetable
- 2 hour counters resetable
- Ambient FlowLight for Decoshield, Brand shield, Centre line and Connect line

optional

- Ambient FlowLight Eyeliner
- HPS (not for 38 SPr)
- Xsens I
- Xsens III
- Qsens
- AirCo
- Pre-wiring² x 180mm →
- Air extraction adapter (2 300mm)
- Air extraction cover
- Inox steel polished panels Decoshield/Brandshield

¹Including My MP3, SmartVoice, Bluetooth, 4 external music channels, 4 loudspeakers, subwoofer and SD cards for 2 internal music channels (relax music, energetic music or program your own music). ²Gives opportunity to install Xsens and SoundAround afterwards (only Xsens at the 42 tubes versions).



Crystal White

Luxura X	38 SLi	38 SLi Intensive	38 SLi High Intensive	38 SLi IP Control	38 SPr
Tubes top	22 x 100 W	22 x 160 W	22 x 160 W	22 x 80/180 W	22 x 120 W
Tubes base	16 x 120 W XL	16 x 120 W XL	16 x 180 W XL	16 x 80/180 W XL	16 x 120 W XL
Face tanner	3 x 400 W	3 x 400 W	3 x 400 W	3 x 400 W	20 x 25 W
Central air exhaust capacity (top)	2000 m ³	2000 m ³	2000 m ³	2000 m ³	2000 m ³
Connection	400V/3N~/50Hz	400V/3N~/50Hz	400V/3N~/50Hz	400V/3N~/50Hz	400V/3N~/50Hz
Power (with AirCo)	6,5 kW (7,4 kW)	7,7 kW (8,8 kW)	8,5 kW (9,8 kW)	9,2 kW (10,2 kW)	5,4 kW (6,8 kW)
Fuses (with AirCo)	3 x 13 A (3 x 14 A)	3 x 15 A (3 x 16 A)	3 x 16 A (3 x 18 A)	3 x 17 A (3 x 18 A)	3 x 12 A (3 x 14 A)
Weight	380 kg (AirCo +40 kg)	395 kg (AirCo +40 kg)	410 kg (AirCo +40 kg)	380 kg (AirCo 40 kg)	380 kg (AirCo +40 kg)

Luxura X	38 Sli Balance
Tubes top	22 x 180 W Premium Balanced E-Power
Tubes base	16 x 180 W XL Premium Balanced E-Power
Face tanner	3 x 400 W
Central air exhaust capacity (top)	2000 m ³
Connection	400V/3N~/50Hz
Power (with AirCo)	10 kW
Fuses (with AirCo)	3 x 16 A
Weight	360 kg (AirCo +40 kg)

Luxura X ₇	38 SLi Intelligent
Tubes top	22 x 100/200W Premium Intelligent E-Power
Tubes base	16 x 100/200W XL Premium Intelligent E-Power
Face tanner	3 x 400 W
Central air exhaust capacity (top)	2000 m ³
Connection	400V/3N~/50Hz
Power (with AirCo)	10 kW
Fuses (with AirCo)	3 x 20 A
Weight	360 kg (AirCo +40 kg)



Luxura X ₇	42 SLi	42 SLi Intensive	42 SLi High Intensive	42 SLi IP Control
Tubes top	24 x 100 W	24 x 160 W	24 x 160 W	24 x 80/180 W
Tubes base	18 x 120 W XL	18 x 120 W XL	18 x 180 W XL	18 x 80/180 W XL
Face tanner	4 x 400 W	4 x 400 W	4 x 400 W	4 x 400 W
Central air exhaust capacity (top)	2000 m ³	2000 m ³	2000 m ³	2000 m ³
Connection	400V/3N~/50Hz	400V/3N~/50Hz	400V/3N~/50Hz	400V/3N~/50Hz
Power (with AirCo)	7,3 kW (8,5 kW)	8,3 kW (9,5 kW)	9,7 kW (10,9 kW)	10,1 kW (11,4 kW)
Fuses (with AirCo)	3 x 13 A (3 x 15 A)	3 x 15 A (3 x 17 A)	3 x 18 A (3 x 19 A)	3 x 18 A (3 x 20 A)
Weight	395 kg (AirCo +40 kg)	410 kg (AirCo +40 kg)	425 kg (AirCo +40 kg)	395 kg (AirCo +40 kg)

Luxura X ₇	42 Highbride	42 SLi Balance
Tubes top	100/200W Premium Balanced E-Power (18xblue, 6xred)	24 x 180W Premium Balanced E-Power
Tubes base	100/200W Premium Balanced E-Power (14xblue, 4xred)	18 x 180W XL Premium Balanced E-Power
Face tanner	4 x 400 W	4 x 400 W
Central air exhaust capacity (top)	2000 m ³	2000 m ³
Connection	400V/3N~/50Hz	400V/3N~/50Hz
Power (with AirCo)	11 kW	11 kW
Fuses (with AirCo)	3 x 20 A	3 x 16 A
Weight	375 kg (AirCo +40 kg)	375 kg (AirCo +40 kg)

Luxura X ₇	42 SLi Intelligent
Tubes top	24 x 100/200W Premium Intelligent E-Power
Tubes base	18 x 100/200W XL Premium Intelligent E-Power
Face tanner	4 x 400 W
Central air exhaust capacity (top)	2000 m ³
Connection	400V/3N~/50Hz
Power (with AirCo)	11 kW
Fuses (with AirCo)	3 x 20 A
Weight	375 kg (AirCo +40 kg)

Technical modifications reserved.